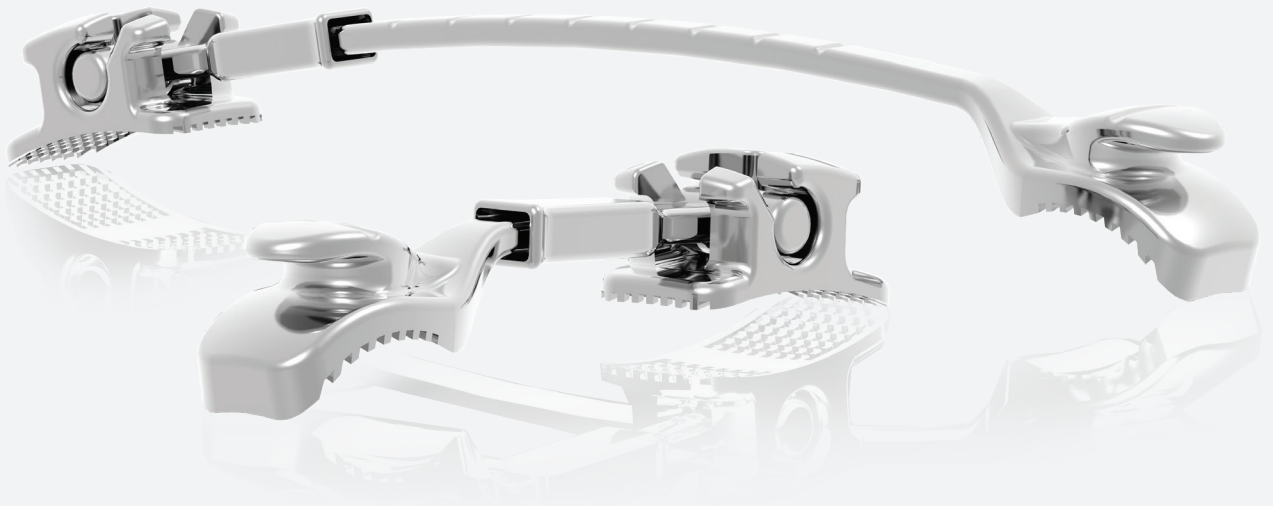




CLASS II CORRECTOR



ANY PATIENT, ANY SIDE,
IT FITS!



orthodontics



INTRODUCTION TO THE APII

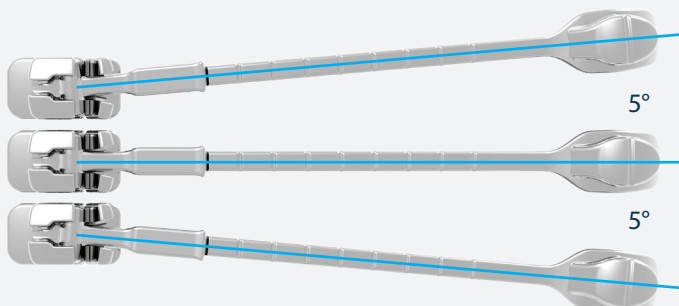
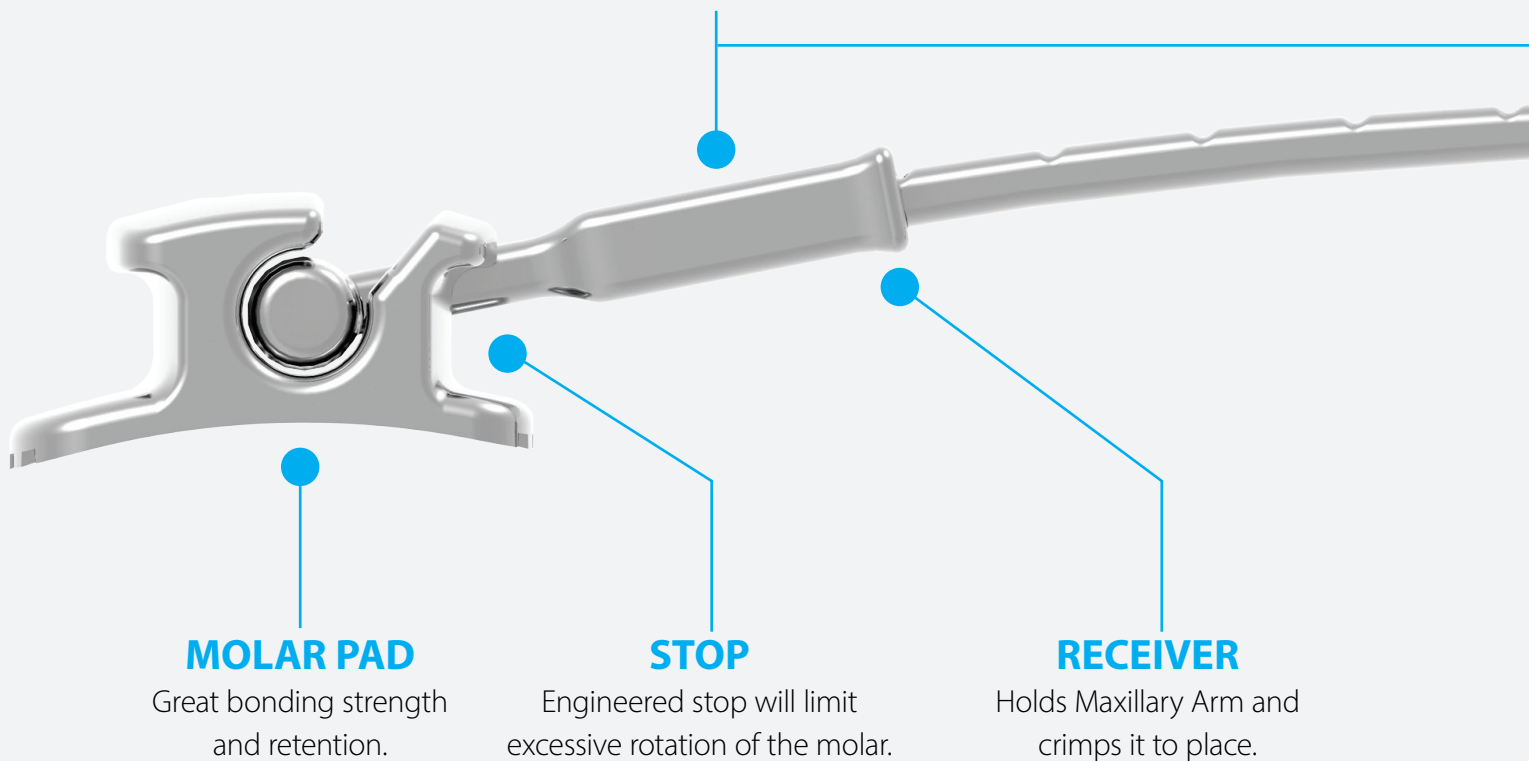
A revolutionary and highly effective solution for Class II treatment that provides unparalleled convenience, simplicity, and patient comfort. Its universal design is engineered to fit seamlessly on either side of the patient's maxillary arch and can be easily sized to meet the patient's requirements. **With the APII™ Class II Corrector, one size truly fits all!** Every consideration has also been given to the design to streamline chairside procedures. Experience effective treatment, versatility, reduced inventory cost, and simplified processes with the APII™ Corrector!



ONE SIZE FITS ALL



DESIGNED TO STREAMLINE YOUR INVENTORY



MOLAR PAD DESIGN

The Molar Pad design allows for a 5° freedom of movement in occlusal and gingival direction.

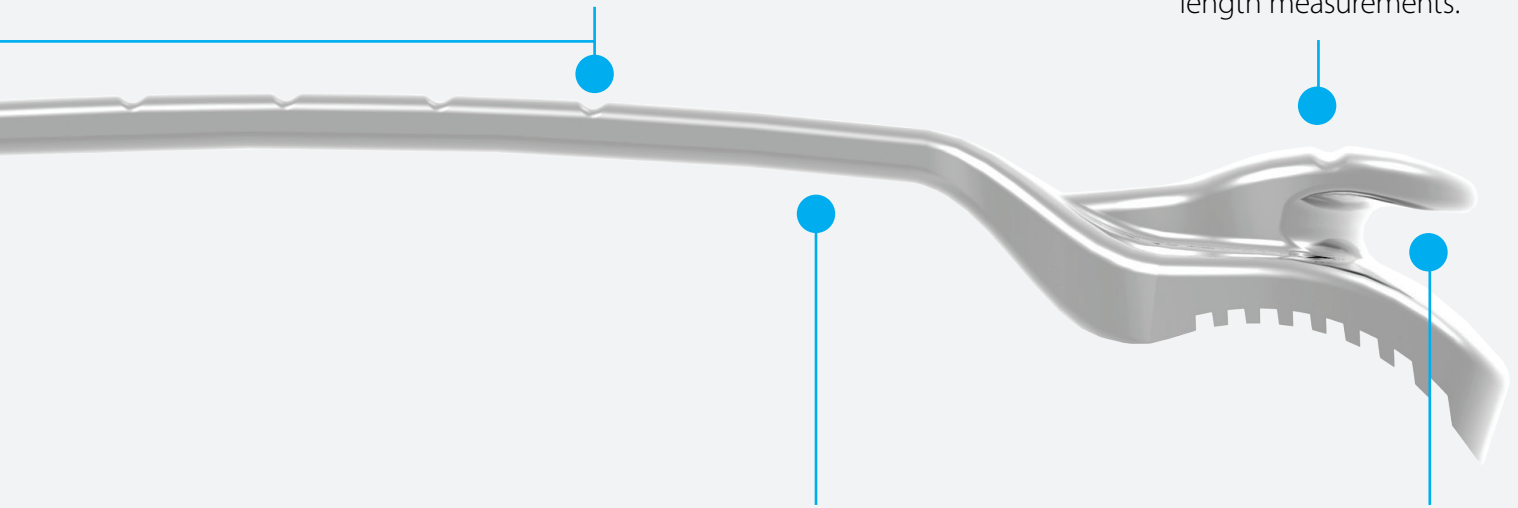
1 LENGTH SET VS. 23 LENGTH SETS

PERMANENT MARKINGS

2 mm apart marking for precise adjustments covering the range of 14-34 mm arm lengths.
1 mm adjustments can be done by cutting at the midpoint between permanent markings.

SCRIBE LINE

Permanent marking used with the sizing template for desired length measurements.

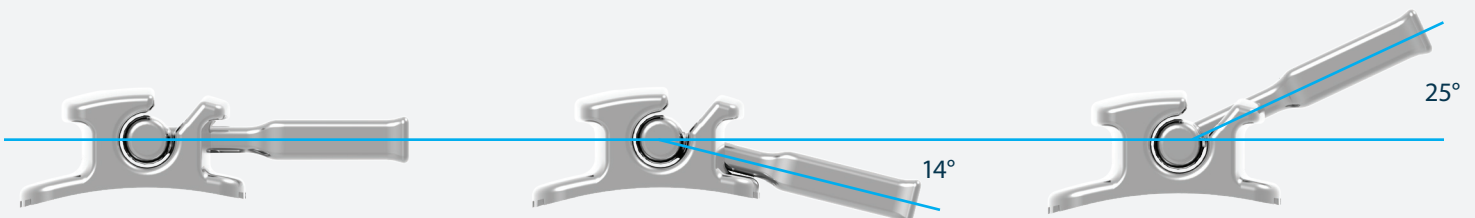


TORQUE

Ability to adjust the arm to the torque and rotation of the cuspid.

HOOK

For easier elastic placement.



ENGINEERED STOP

The Molar Pad design is engineered to provide controlled distal rotation of the 1st molar and labial freedom of movement. The engineered stop will limit excessive rotation of the molar.



ARM LENGTH

The Maxillary Arm can be cut to the desired length which significantly reduces inventory and cost.

UNIVERSAL

Can be used on right or left and for Class II and Class III cases.

REMOVABLE ARMS

Reduces emergency visits in case of a cuspid pad debond.

SMOOTH SURFACES

Makes it comfortable for patients to wear by not poking the lips or cheeks.

REDUCES TREATMENT TIME

Overall treatment time is reduced by standardizing treatment protocols and starting cases from a Class I platform.

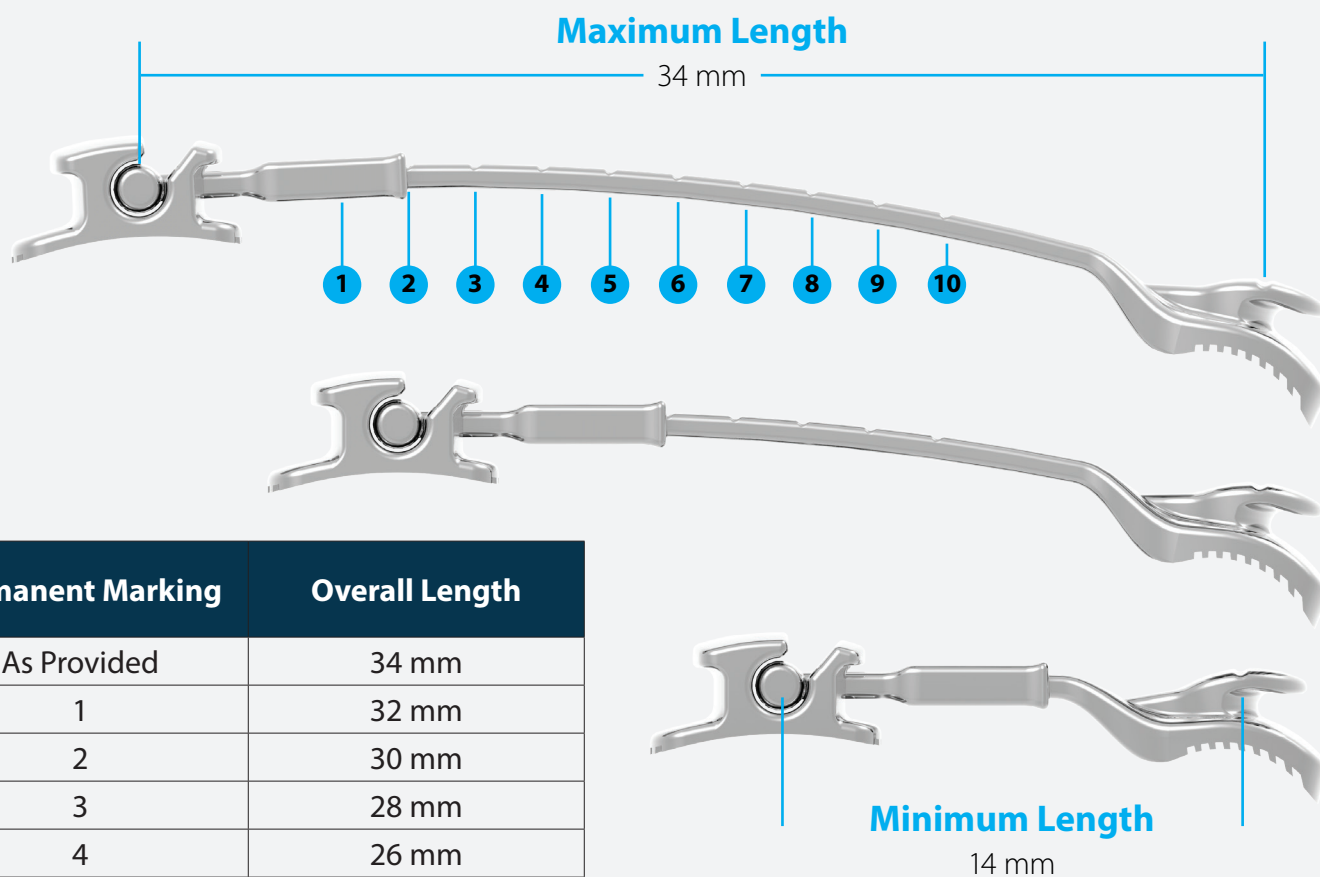
SAME DAY STARTS

Takes under 15 minutes to place and can be bonded immediately after patient consultation.

NO LAB DELAYS

Eliminates lab time delays with direct-bond placement.

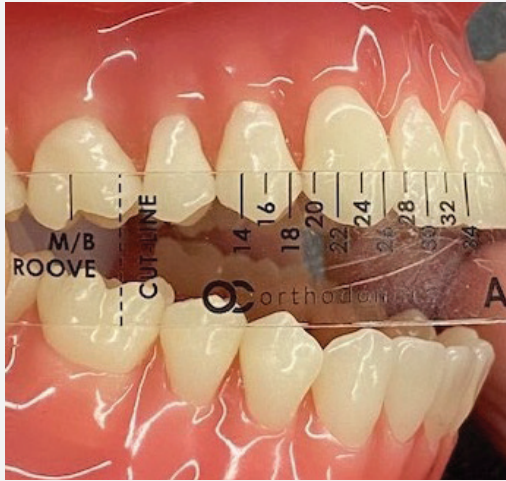
CUT TO THE DESIRED LENGTH



Permanent Marking	Overall Length
As Provided	34 mm
1	32 mm
2	30 mm
3	28 mm
4	26 mm
5	24 mm
6	22 mm
7	20 mm
8	18 mm
9	16 mm
10	14 mm

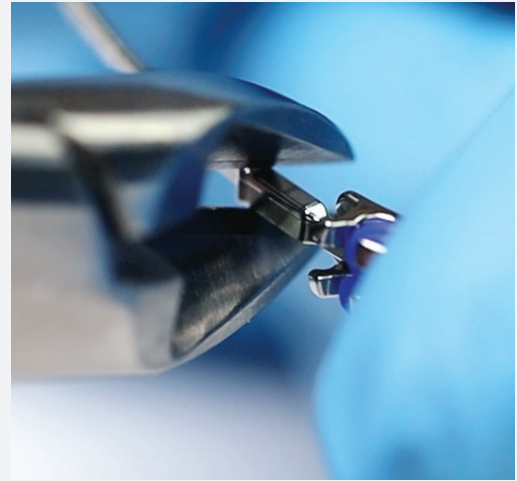
NOTE: Permanent marks are 2 mm apart. Cut between marks for 1 mm adjustments.

SET-UP



STEP 1 - SIZE

Align the M/B Groove line on the buccal groove of maxillary 1st molar. Measure to height of contour on the cuspid or bicuspid to determine the length of the Maxillary Arm.



STEP 3 - CRIMP

Ensure the Maxillary Arm is fully seated in the Receiver. Using an orthodontic hard wire cutter or lab cutter, crimp the Receiver on its O-G sides at two locations (*near the funnel entry to the Receiver & at the mid-point of the Receiver*).



STEP 2 - CUT

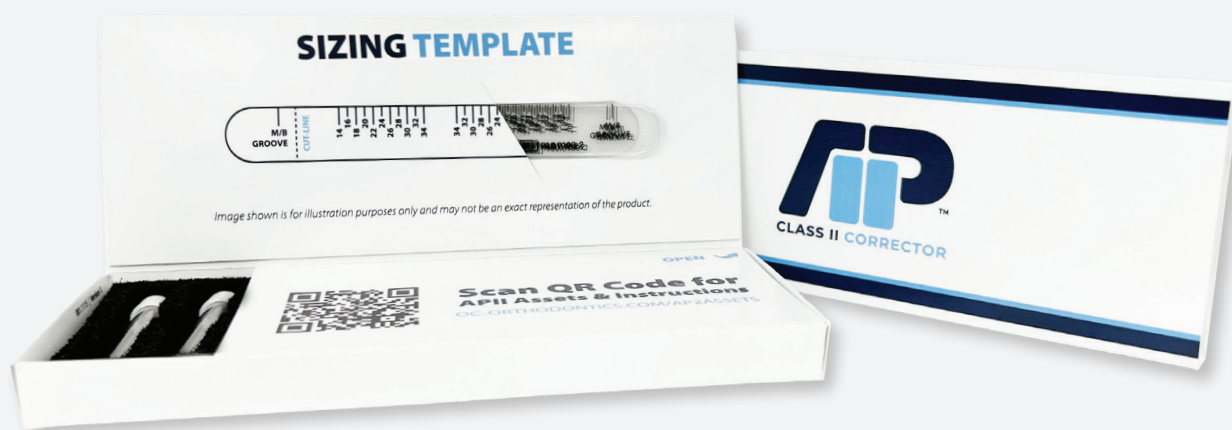
A hard wire cutter or lab cutter are recommended for cutting the Maxillary Arm to your desired size. The permanent marks are 2 mm apart.



STEP 4 - ADJUSTING

Adjust the Maxillary Arm for cuspid/bicuspid torque and rotation. Use 2 Weingart pliers, one at the distal of cuspid pad and the other on the Maxillary Arm.

PATIENT KITS



AVAILABLE IN 1 OR 5 PATIENT KITS

Description	Part Number
APII Class II Appliance: One Patient	960.0001
APII Class II Appliance: Five Patient	960.0005

1 PATIENT KIT INCLUDES:

- 2 - APII Appliances
- 2 - Sizing Template

5 PATIENT KIT INCLUDES:

- 10 - APII Appliances
- 5 - Sizing Template

APII ELASTIC GUIDE

Patients are typically given 6 oz during initial treatment. After the first month, 8 oz are typically used.

Stage	Elastic	Part Number
First 6 Weeks	LE 1/4" 6mm 6.0 oz	60.63.856.00060
Until Super Class I or Overcorrected	LE 3/16" 5mm 8.0 oz	60.63.847.00080



MARKETING & PATIENT EDUCATION



IMAGES, VIDEOS, PATIENT BROCHURES & MORE!

We want to help you bring more patients into your office and educate them. Use the QR code to visit our website for more information and downloadable content.

[WWW.OC-ORTHODONTICS.COM/AP2ASSETS](http://www.oc-orthodontics.com/AP2ASSETS)



(866) 752-0065 | www.oc-orthodontics.com | #MAR.057

